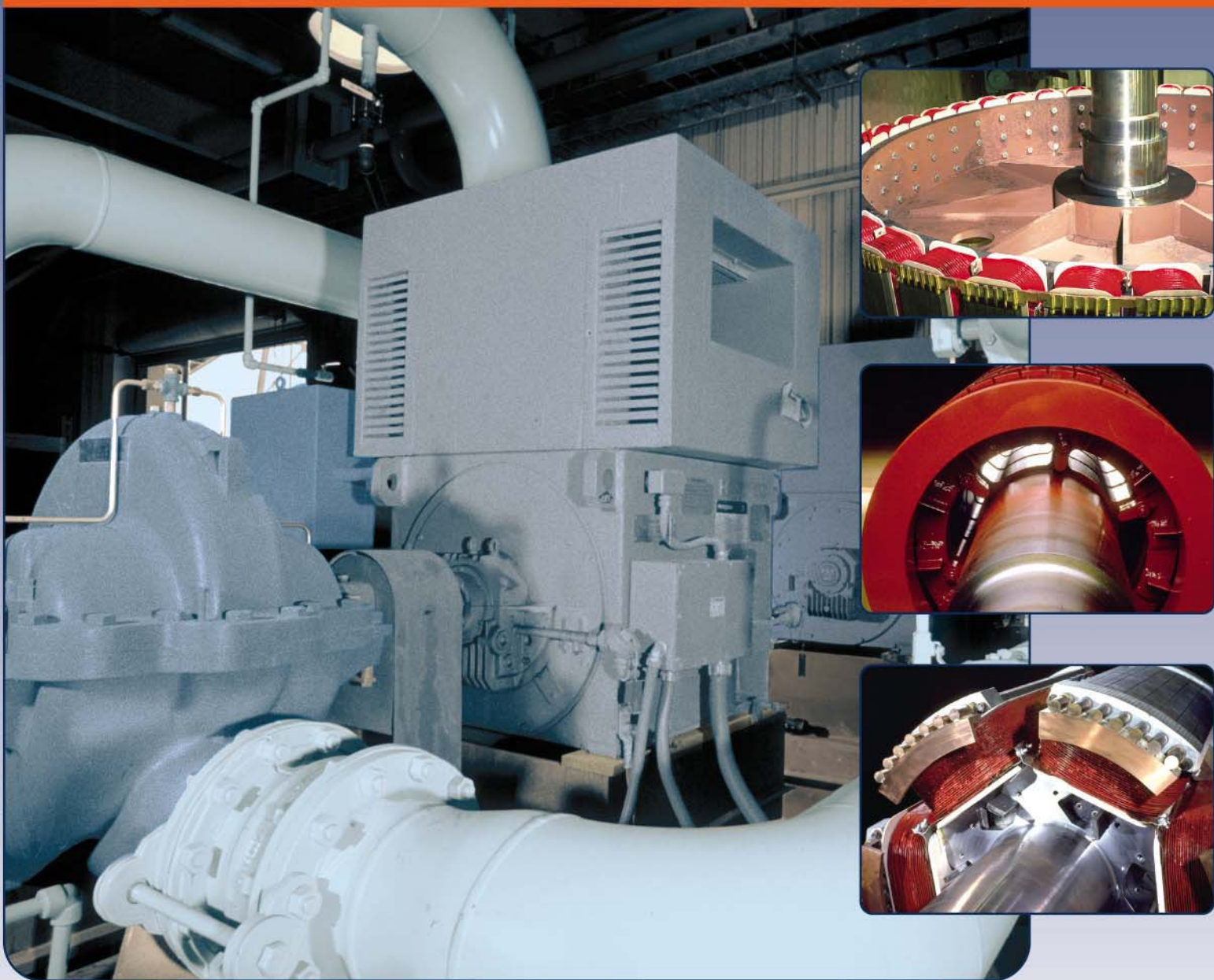


# CAPABILITIES



**TECO**   **Westinghouse**

# A FULL LINE OF RELIABLE SOLUTIONS

## BUY WITH TOTAL CONFIDENCE

TECO-Westinghouse Motor Company offers motors in sizes ranging from 1/4 HP up to 100,000 HP. Whatever your need, we can provide a solution to virtually all of your application requirements.

TECO-Westinghouse Motor Company comprises the experience of Westinghouse, a leader in the motor industry since 1888, and TECO Electric & Machinery Company, Ltd., a multi-national conglomerate with over 45 years of motor experience. TECO-Westinghouse Motor Company embodies the capabilities and proud traditions of excellence of these organizations and carries them forward.

You can buy with total confidence because you will be working with a company that offers a full line of outstanding motors and much more.

- Over a Century of Motor Experience
- Innovative Solutions to Industry's Demanding Needs
- Strong Support From Our Experienced Round Rock, Texas Facility
- High Efficiency Motor Designs with Time Tested Motor Technologies
- Advanced Engineering Team Specializing in:
  - Electromagnetic/Mechanical FEA
  - Computational Fluid Dynamics
  - Rotor Dynamics
  - Solid Modeling
  - Mathematical Statistics
  - System Analysis
- Modern Test Facilities
- Hundreds of TECO-Westinghouse Distributors Around the Nation
- Outstanding Customer Service
- Total Quality Program
- A Complete Selection of Genuine Motor Replacement Parts
- A Long-Term Commitment to Serving Your Motor Needs

## G L O B A L RESOURCES

TECO-Westinghouse Motor Company is dedicated to servicing our customer's needs in a variety of ways. Our manufacturing plants are located in the U.S., Taiwan, Malaysia, Australia, Great Britain and China. A full line of induction, synchronous and DC motors and generators are available in both horizontal and vertical configurations, from 1/4 HP to 100,000 HP. In North America there are several regional warehouses stocking a vast array of motors up to 900 HP for our customer's convenience. Our Round Rock, Texas facility conducts sales and marketing, customer service, engineering, drafting, manufacturing, testing, final shipment, field service and repairs of many types of large custom-designed and specialty motors.

We have the flexibility to manufacture many of our top quality products in the U.S. or the Far East. These global resources uniquely position us to satisfy the market's diverse needs.



The TECO-Westinghouse Motor Company manufacturing and global R&D facility in Round Rock, Texas.

## T-FRAME MOTORS



This high quality line of AC induction motors is designed, manufactured and tested to meet, or exceed, the latest NEMA, IEEE and CSA standards.

- TEFC Single Phase
- TEFC & ODP Rolled Steel
- Standard Eff. ODP
- High Eff. ODP
- Oil Well Pump Motors
- Energy Eff. Round Body & Footed C-Face Motors
- Energy Eff. Footed TEFC (MAX-SE)
- High Eff. Explosion Proof
- ODP & TEFC JM/JP Closed Coupled Pump Motors
- Crusher Duty Line (MAX-HT)
- TEFC High Eff. (MAX-E1)
- TEFC NEMA Premium Eff. (MAX-E2)
- IEEE 841 NEMA Premium Eff. (MAX-E2/841)
- High Eff. Inverter Duty (MAX-E1/31)
- TEFC High Eff. Washdown Motors
- High Eff. Metric Frame Motors
- TEFC & ODP Medium Voltage Motors

## GLOBAL SERIES MOTORS



TECO-Westinghouse Motor Company's Global Series line consists of form wound, totally enclosed fan-cooled (TEFC) and open drip proof motors (ODP) ranging in size from 250 HP to 2000 HP in medium and low voltage designs.

Designed to operate in a variety of industrial environments, the Global Series line has a rugged cast-iron frame and end brackets for rigidity and excellent corrosion resistance.

This dependable workhorse provides numerous features to ensure long-term performance, including: copper rotor construction, a corrosion resistant external fan and Class F insulation.

Global Series machines are the ideal choice when a reliable large induction motor is needed in a dirty or corrosive operating environment.

## WORLD SERIES MOTORS



World Series Induction Motors combine sophisticated design technology with advanced material construction. Horizontal and vertical configurations are available.

Using state-of-the-art computer programs, TECO-Westinghouse Motor Company engineers design our World Series line to deliver operating efficiencies that are among the highest in the world.

Available in sizes from 250 HP to 5000 HP, World Series Motors provide impressive design features that include:

- Copper Rotor Construction
- Class F Thermalastic® Epoxy Insulation
- High-Grade, Electromagnetic Steel Laminations
- Rugged Fabricated Steel Frames
- Spherically Seated, Self-Aligning, Split-Sleeve Bearings

## H-SERIES MOTORS



Built to address the most demanding applications, H-Series Motors are the largest induction motors in the TECO-Westinghouse Motor Company product line.

The H-Series includes horizontal and vertical, squirrel cage induction motors ranging from 2500 HP to 30,000 HP, and from 2300V to 13,800V.

TECO-Westinghouse Motor Company is the acknowledged leader in Pole Amplitude Modulation (PAM) Technology. PAM Motors are single-winding, two-speed machines that can be offered in any number of fixed-pole combinations.

All H-Series Motors come with Thermalastic® Epoxy Insulation, copper rotor construction, and spherically seated, self-aligning, split-sleeve bearings.



## DC MOTORS

Since 1888, when the first Westinghouse direct current motor was manufactured, we have led the industry in pioneering new applications and technologies.

TECO-Westinghouse Motor Company's leadership position in supplying DC machines is a result of an uncompromising commitment to quality design manufacturing and customer service.

Our rugged machine designs are ideally suited for the metals, mining and marine markets. A broad range of ratings up to 35,000 HP is offered.

Crafted with many impressive design features, these custom engineered machines include:

- Arch-Bound, V-Ring, "Balanced-Spring" Commutators
- Digard® Riser Insulation
- Heavy-Duty Stator Assembly
- Thermalastic® Epoxy Insulation
- Rugged Rotor Construction
- Spherically Seated, Self-Aligning, Split-Sleeve Bearings



## SYNCHRONOUS MOTORS

TECO-Westinghouse Motor Company Synchronous Motors provide superior value in terms of proven reliability, low maintenance and long life in demanding applications.

Synchronous machines operate at fixed speeds regardless of load variations. With high efficiencies and power factor improvement capabilities, synchronous motors can substantially reduce a plant's electric power costs.

Motors are available as brush-type, with exclusive PULSE/SYN® brushless excitation control.

Available in a size range from 500 HP to as large as your needs dictate (60,000 HP and above), these heavy-duty motors are offered in both high speed and slow speed designs.

Engine-type synchronous motors and provisions for adjustable frequency applications are also available.



## SPECIALTY MOTORS

We also offer a wide variety of specialty motors including:

- Nuclear 1E Motors
- Explosion Proof Motors
- Two-Speed PAM Motors
- Vertical P-Flange Motors
- Wound Rotor Motors

# Trust the Power

## INDUSTRIES SERVED

Our motors operate machinery in virtually every primary and process industry, including the chemical, petrochemical, steel, mining, pulp and paper, electric utility, marine, water and wastewater treatment, air conditioning and air separation industries.

Our dependable motors drive pump, fans, compressors, crushers, extruders, conveyors and most types of variable and constant torque process equipment.



## COMPLETE LARGE MOTOR SERVICE

When a large motor exhibits signs of serious problems, or in the worst case, breaks down and halts a critical process in your facility, you will need expert help. TECO-Westinghouse Motor Company's Service Division offers you the most comprehensive service package available either at your site, in our shop or in the shop of one of our service partners. Whether your large motor is medium or high voltage, AC induction, synchronous, or DC, TECO-Westinghouse Motor Company can help you.

We offer more than simple repairs - we deliver engineered solutions to complex large motor problems. Our repair, redesign and remanufacturing capabilities are backed by state-of-the-art engineering design tools, as well as more than 110 years of proven experience designing, manufacturing and repairing large electric motors.

So, if you need more horsepower, a different speed, a higher voltage or simply want to extend the life of your valuable large motor, contact the TECO-Westinghouse large motor experts. We can provide genuine renewal parts, drop-in replacement components (rotors, stators, poles, DC armatures, field frames, etc.), redesign and remanufacturing for reapplication, or a first class repair that can give your aging motor the life expectancy of a new motor. If your large motor is a Westinghouse or TECO-Westinghouse motor, we can have replacement windings or other key components manufactured in advance of a planned outage to minimize turnaround time for shop or field repair and maintenance.

For technical assistance, power systems consulting, troubleshooting, inspection, major maintenance, field repair, testing or training of your maintenance technicians, call our team of engineering and field service specialists. For more information visit the Service section of our website at [www.tecowestinghouse.com](http://www.tecowestinghouse.com), or call us at 888-754-5006.





5100 N. IH-35  
Round Rock, Texas 78681  
Toll Free: 1-800-451-8798  
[www.tecowestinghouse.com](http://www.tecowestinghouse.com)