

Powertrain Solutions for Professional Drones



TECO Hairpin Motors for Drones

TECO develops and manufactures advanced hair-pin motors that set new benchmarks for agricultural and logistics drones. By combining flat-wire winding with a Halbach Array external-rotor architecture, TECO motors achieve outstanding power density and thermal performance—delivering up to 75 kg of thrust per motor to meet the demands of heavy-payload UAV operations.



Motor Parameters	Unit	T Power Air OD128	T Power Air OD100 LR
Rated Voltage	Vdc	74	70
Operating Voltage	Vdc	60 - 74	60-74
Maximum Thrust	kg/rotor	76.5	40
Peak Power	kW	12.9	8.6
Rated Power	kW	4.65	4
KV Value	rpm/V	46	60
Highest Efficiency	%	91.8	90.5
Motor Dimension (D x L)	mm	140 x 79.3	110 x 62.5
Weight	kg	3.5	1.6
Recommended Propeller size	--	63 x 24"	54 x 20"

ESC Parameters	Unit	TE250
Voltage range	Vdc	60 -74
Maximum allowable voltage	Vdc	80
Continuous Current	Arms	95
Peak Current	Arms	230 (3 sec)
Communication Method	--	CAN
Control Method	--	PWM + CAN
Bit Rate	Bps	500 k

**Specifications are subject to change without notice*

TECO Motors for Drones

For lightweight UAV platforms, TECO offers compact, high-efficiency motors optimized for agility, endurance, and precise control. Designed with refined electromagnetic structures and lightweight construction, these motors deliver exceptional efficiency and thermal stability—making them ideal for payloads below 10 kg in professional inspection, surveillance, and logistics applications.



Motor Parameters	Unit	2317 KV800	3517 KV760	4535 KV620	6013 KV210	10010 KV110
Cells in series	S	4	6	12	12	12
Maximum Power	W	330	1,450	3,600	2,700	3,802
Rated Power	W	110	450	600	900	1,000
Maximum Speed	rpm	8,700	12,000	29,760	6,500	5,280
Thrust per Watt	g/W	9.5	9 max	10 max	17.2 max	13.6 max
Rotor outer diameter	mm	28.8	42.4	53.4	68.1	108.4
Weight	g	81.5	181	522	386	810
Recommended Propeller size	mm	10"	12"	18"	22"	36"

**For other models, please contact TECO-Westinghouse*

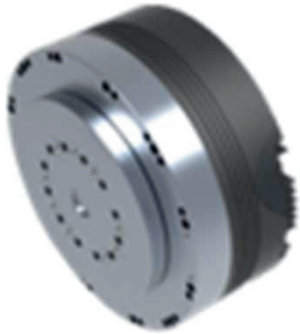
ESC Parameters	Unit	LC-ESC-20A-6S	LC-ESC-40A-6S	LC-ESC-40A-12S
Voltage range	Vdc	4-6S LiPo	4-6S LiPo	8-12S LiPo
Continuous Current	Arms	20	40	40
Peak Current (10 sec)	Arms	30	70	80
Communication Method	--	PWM	PWM	PWM
Size (L x W x H)	mm	60x28x18	69.5x28x18	83x38x18
Weight (excluded wiring)	g	11	13	25
Recommended Motor Matching	--	2317 KV 800 3508 KV 650 5308 KV 280	3008 KV 1150 3115 KV 900 3517 KV 760	3024 KV 790 6013 KV 210 6023 KV 220 10010 KV 110

Robotic Mobility System

From Motion Control to Lifelike Motion



M1-140



M2-360

TECO Motors for Joint Modules

TECO joint motor is designed for advanced robotics and intelligent automation, delivering powerful torque with precise control for smooth and accurate motion. Its fast response and stable output ensure reliable performance in real-time applications. Built with industrial-grade IP66 protection, the motor withstands dust, water, and harsh operating environments. A multi-sensor architecture enhances accuracy and long-term stability, while the open platform design supports flexible integration and smart application development. This combination of durability, precision, and scalability makes it an ideal motion solution for next-generation robotic and automation systems.



Technical Specifications	Unit	M1-140	M2-360
Size	mm	64.8 x Φ 171	81.5 x Φ 171
Operating Voltage	V	36~64	36~64
Max Torque	Nm	140	360
Rated Torque	Nm	40	103
Output Speed	rad/s	15	15
Motor Speed	rpm	1230	2293
Gear Ratio		9	16
Rated Power	W	600	1544
Max Power	W	900	2000
Communication		EtherCAT / USB	EtherCAT / USB
Encoder Type		Multi-turn absolute	Multi-turn absolute
Position Control Resolution		17-bit /Single-turn 16-bit / Multi-turn	17-bit /Single-turn 16-bit / Multi-turn

North America Headquarters
TECO-Westinghouse
5100 North IH-35
Round Rock, TX 78681
URL: www.tecowestinghouse.com

For more information please contact
Business Development
Kassandra Prieto
prietok@tecowestinghouse.com
512-218-7166