

TECO Westinghouse Motor Company

5100 North IH-35 Round Rock, TX 78681
Tel:1-800-279-4007 Fax:512-218-7278 www.tecowestinghouse.com

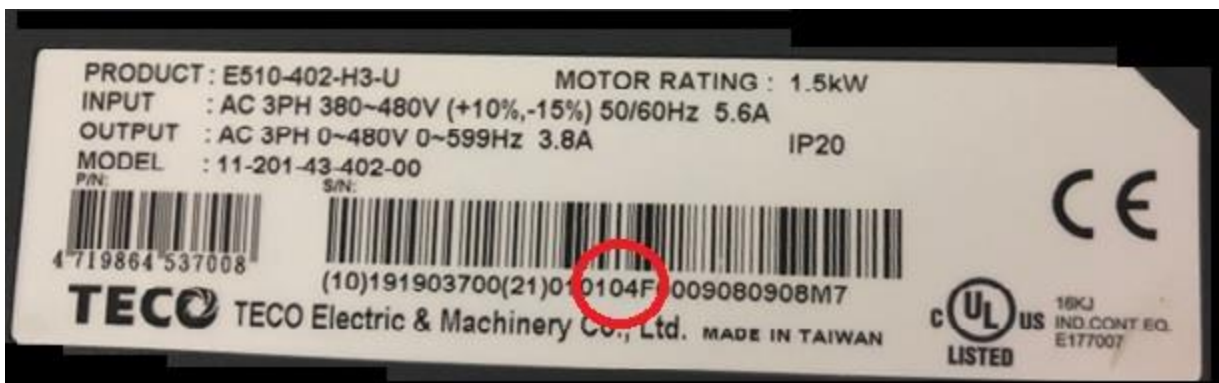
Issue Date	Technical Notice	Issuing No.
9/11/19		091119Ver1
Apparatus Type & Model	E510 IP20 Series	

Subject : V1.04 Firmware Defaults

Affected Model: All E510 IP20 Series

Description:

Firmware version V1.04 parameter defaults incorrect from manual and quick start guide. Firmware identification can be found within the product S/N on carton label and drive label as noted below



Corrective Action:

The current default for parameters set the drive in remote mode:

00-02 = 1 (Main Run Command Source Selection)

00-05 = 2 (Main Frequency Command Source Selection)

00-06 = 0 (Alternative Frequency Command Source Selection)

To have the start/stop from the keypad and frequency via the keypad mounted speed pot perform the following:

Step 1: Power on the E510 and the screen will flash '00.00'. Push the DSP/FUN key to access the parameters, the screen will change to '00-00' with the 3rd digit from the right flashing.

Step 2: Push the </RESET until the right most '0' is flashing. Push the ▲ Arrow 2x and the screen will show '00-02'.

Step 3: Push READ/ENTER to access the parameter, the screen will change to a value

TECO Westinghouse Motor Company

5100 North IH-35 Round Rock, TX 78681
Tel:1-800-279-4007 Fax:512-218-7278 www.tecowestinghouse.com

of '1'. Push the ▼ arrow to change the value to '0' and then push READ/ENTER. The word 'END' will appear indicating the parameter has been saved.

Step 4: Push DSP/FUN to back out of parameter '00-02', then push the ▲ arrow 3x to make the display read '00-05'.

Step 5: Push READ/ENTER to access the parameter the screen will change to a value of '2'. Push the ▼ arrow to change the value to '1' and then push READ/ENTER. The word 'END' will appear indicating the parameter has been saved.

Step 6: Push the DSP/FUN key until you cycle back to the flashing frequency the drive is now set for this local control.

To have the start/stop from the keypad and the frequency from the ▲/▼ arrows perform the following:

Step 1: Power on the E510 and the screen will flash '00.00'. Push the DSP/FUN key to access the parameters, the screen will change to '00-00' with the 3rd digit from the right flashing.

Step 2: Push the </RESET until the right most '0' is flashing. Push the ▲ Arrow 2x and the screen will show '00-02'.

Step 3: Push READ/ENTER to access the parameter, the screen will change to a value of '1'. Push the ▼ arrow to change the value to '0' and then push READ/ENTER. The word 'END' will appear indicating the parameter has been saved.

Step 4: Push DSP/FUN to back out of parameter '00-02', then push the ▲ arrow 4x to make the display read '00-06'.

Step 5: Push READ/ENTER to access the parameter the screen will change to a value of '0'. Push the ▼ arrow to change the value to '5' and then push READ/ENTER. The word 'END' will appear indicating the parameter has been saved.

Step 6: Push DSP/FUN to back out of parameter '00-06', then push the ▼ arrow 1x to make the display read '00-05'.

Step 7: Push READ/ENTER to access the parameter the screen will change to a value of '2'. Push the ▼ arrow to change the value to '0' and then push READ/ENTER.

Step 8: Push the DSP/FUN key until you cycle back to the flashing frequency the drive is now set up for this local control.

****Note if you do not follow the steps when as listed the drive will display 'ERR1'****

TECO Westinghouse Motor Company

5100 North IH-35 Round Rock, TX 78681
 Tel:1-800-279-4007 Fax:512-218-7278 www.tecowestinghouse.com

Copy to			©				Sincerely : <i>Brian Smith</i> 09/11/2019
	SA O.B.D	TEU	TWMC	TAC	TEK	Subic	
Received by							Approved by : Brian Smith