

VersaBridge[®]

*Patented, Compact, High Performance
Medium Voltage Drive*



2.3 to 13.8 kV Class
1500 to 40,000 HP

With over 100 years of experience in motor design and application, TECO-Westinghouse Motor Company is a premier supplier of AC and DC motors and generators. Ranging from fractional HP ratings to 100,000 HP, these high-quality machines are used in a variety of rugged applications across several industries throughout the world.

TECO-Westinghouse comprises the experience of Westinghouse, a leader in the motor industry since 1888, and TECO Electric & Machinery Co, Ltd., a multinational conglomerate with over 50 years of manufacturing experience. Together, TECO-Westinghouse embodies the capabilities and proud traditions of excellence from both companies and carries them forward.

In keeping with this idea, TECO-Westinghouse is pleased to now offer a complete package of Variable Speed Drive (VSD) systems that includes an Input/ Output Switchgear, Medium Voltage Drive (MVD), and motors.

VersaBridge® MVDs provide reliable motor control for a variety of industry specific and general purpose applications including Oil & Gas, Utility/ Power Generation, Metals and Mines. These patented MVDs are designed utilizing a multilevel H-Bridge topology that reduces the harmonic levels to extremely low levels. The modular design facilitates ease of installation, commissioning and maintenance. The VersaBridge® is an innovative product that combines reliable, simple, and compact solutions with the latest power electronics and cooling technologies.

MAIN CHARACTERISTICS

Modularity: Modular design with common building blocks (Cube, Slices, Mains) makes the VersaBridge® MVD scalable for different power ratings with fewer spare parts. Power Electronics Modules (Cubes) can be easily removed for maintenance.

Quick and Easy Installation: There are configurable power cable entries/exits on the top, bottom, or both. There are no field cabling requirements to connect the assembled Mains and Slice sections.

Serviceability: Modular design requires few spare parts. Additionally, the parts are universal and can be used in any configuration regardless of the voltage or power class.

Multilevel, Cascaded, H-Bridge Topology produces near sinusoidal wave output which reduces motor harmonics and torque pulsation, even at low speeds with virtually no cable length restriction.

Ultra Low Line-Side Harmonics are fully compatible with new or existing motor installations without the need for an external filter and exceed IEEE-519 standard requirements.

Bypass Manual/Automatic: The VersaBridge® MVD has isolating contactors within each Cube. In the event of a fault, contactors will isolate the faulty Slice and allow the MVD to restart, catching the spinning motor.

Flying Start into a Spinning Load: The VersaBridge® MVD offers the ability to catch a spinning load without any torque, voltage, or current having a negative impact on the equipment.

N+1 ... N+N Redundancy: In addition to the Slice bypass option, the drive can be configured to have additional redundancy options for continued operation at full rated output power.

Power Dip Ride-Through: The VersaBridge® MVD design provides a five cycle power loss ride-through to keep the process running without the need for auxiliary UPS.

One Drive for Multiple Motors: The VersaBridge® MVD can start multiple motors and transfer them synchronously to utility lines and back to the drive.

Industry Standard Ethernet Modbus Communication: Standard protocol allows the VersaBridge® MVDs to easily communicate with various SCADA or DCS systems.



VersaBridge® Applications



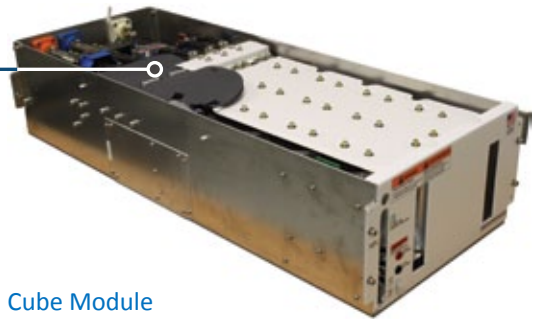
Petrochemical, Oil & Gas Industries	Pulp & Paper
Compressors	Pumps
Pumps	Fans
Fans	Refiners
Mixers	Vacuum pumps
Agitators	Chipper
Metals & Mining	Cement
Mills (SAG, Ball, Rolling)	Pumps
Pumps	Fans
Fans	Conveyors
Conveyors	Kilns
Water/ Wastewater	Utilities
Pumps	Pumps
Fans	Fans



VERSABRIDGE® PRODUCT FEATURES

Power Electronics Module

- Advanced cooling technology
- High reliability
- Micro-channel heat exchangers under every IGBT



Cube Module

- Basic building blocks of the VersaBridge® MVD
- Sealed electronics with a 50 kV rated dielectric barrier
- Latest generation of semiconductor technology
- Draw-out design that allows fast and easy servicing
- DC film capacitors for long life
- DC bus voltage real-time monitoring



Cooling System

- Two phase pump/ condenser cooling system
- R134a coolant media
- Air-cooled micro channel condenser
- Dry-break coupling connection
- 200 – 277 V, 1 phase, 50/60 Hz, 10 A max



Cooling System Pump

- Redundant pump design
- Variable speed
- Removable tray design for fast and easy servicing and replacement

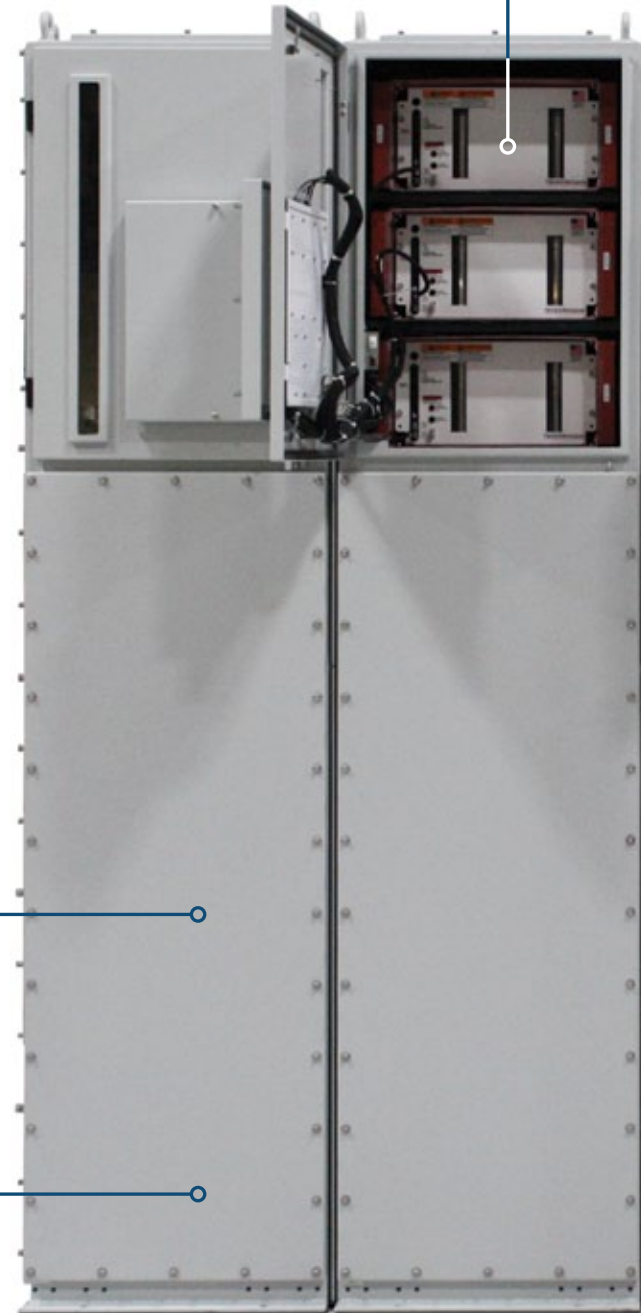


Fan (Back)

- Redundant fan design
- Low noise
- Variable speed
- Hot swappable in some configurations

Sealed Enclosure

- Two phase cooling media (R134a) for both power electronics and transformer section
- Less potential for corrosion
- Longer life time
- No auxiliary HVAC cabling required



Slice

Slice

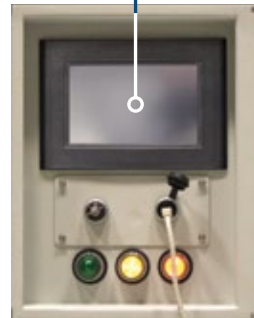
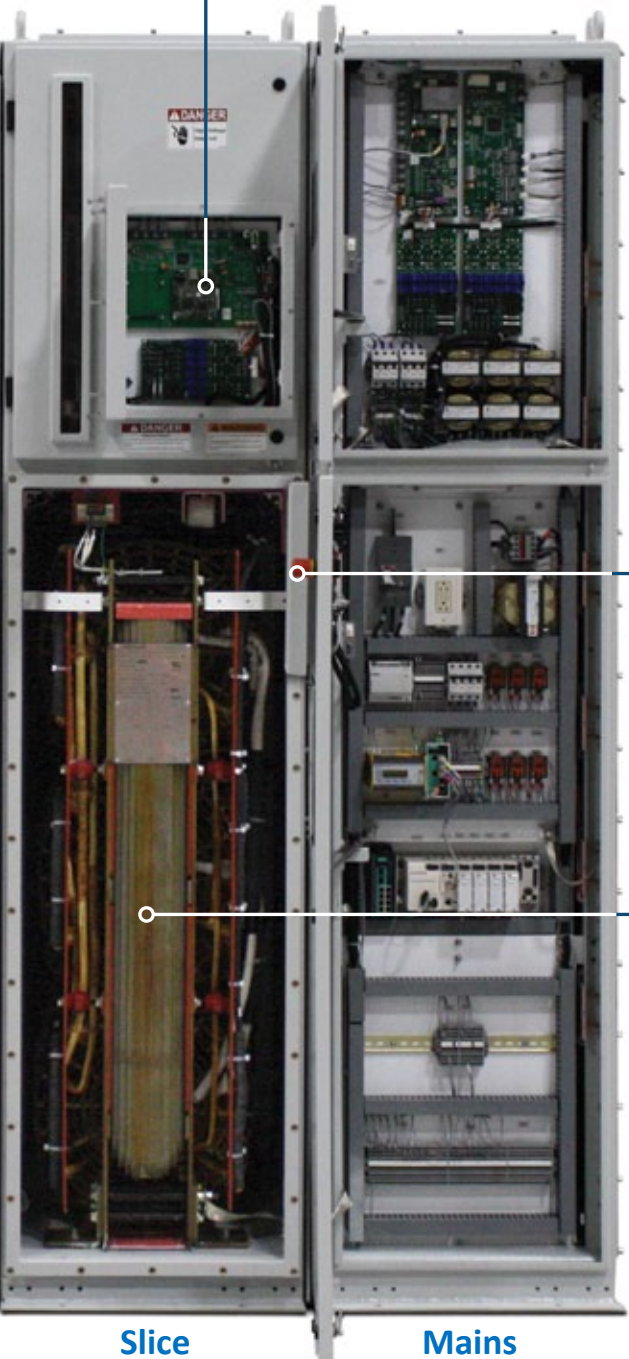
Fiber Optic Communication Interface

- Immune to noise
- Isolation between high voltage and control section
- Used in Main to Slice, Slice to Cube, Cube to gate driver boards, and feedback signals
- Isolates high voltage and control sections



Monitoring and Protection

- Output fault protection
- Real-time temperature monitoring in every IGBT, every card, and on the transformers
- Ground fault protection



Touch Screen Control

- Color graphic display
- Numerical bars and graph display
- User friendly



Transformer

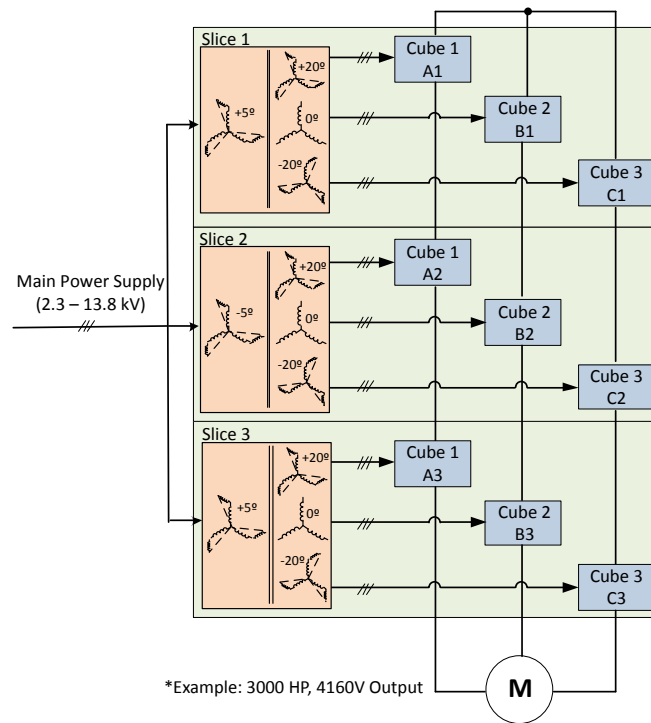
- Phase shifted winding effective 36 pulse rectifier
- High power factor (>0.96)
- High efficiency (98%)
- IEEE 519 compliant
- Same footprint for all voltage classes up to 13.8 kV
- Horizontally mounted coil with RTDs for effective forced air cooling
- Round coils for higher short circuit strength
- Insulated and sealed connections

SYSTEM TOPOLOGY

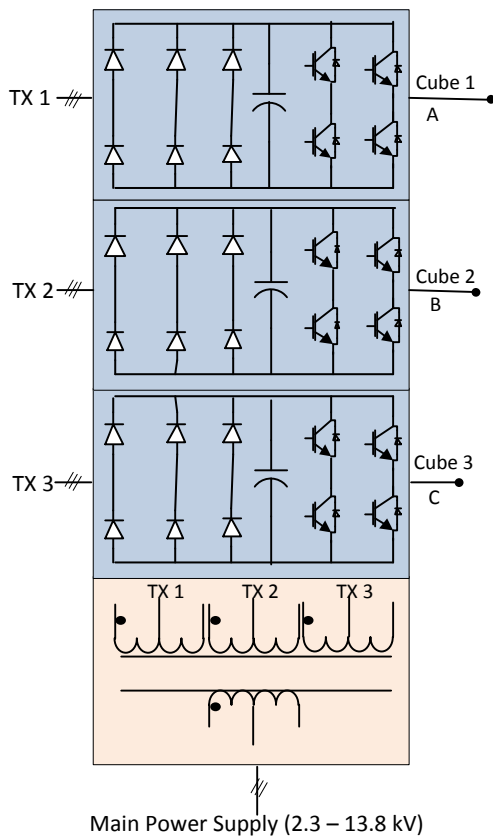
Each VersaBridge® MVD has at least one Mains section and a number of Slices depending on the system configuration. The Mains section includes a customer and motor connection. Each Slice is composed of three Cubes, one Cube for each output phase.

Medium voltage levels are obtained by combining the outputs of multiple low voltage Cubes. Each Slice can provide up to 1380 V_{rms}. When adding the Slices in series or parallel, different voltage and current levels can be achieved.

For example, a three-phase 4160 V output can be achieved by combining three slices in series as shown to the right. For higher output capabilities, the VersaBridge® topology can be extended to reach 13.8 kV.



SLICE TOPOLOGY



A multilevel cascaded H-Bridge topology produces a near sinusoidal current and voltage waveform. This **patented technology** utilizes a modular transformer and power electronics cabinet section referred to as a Slice.

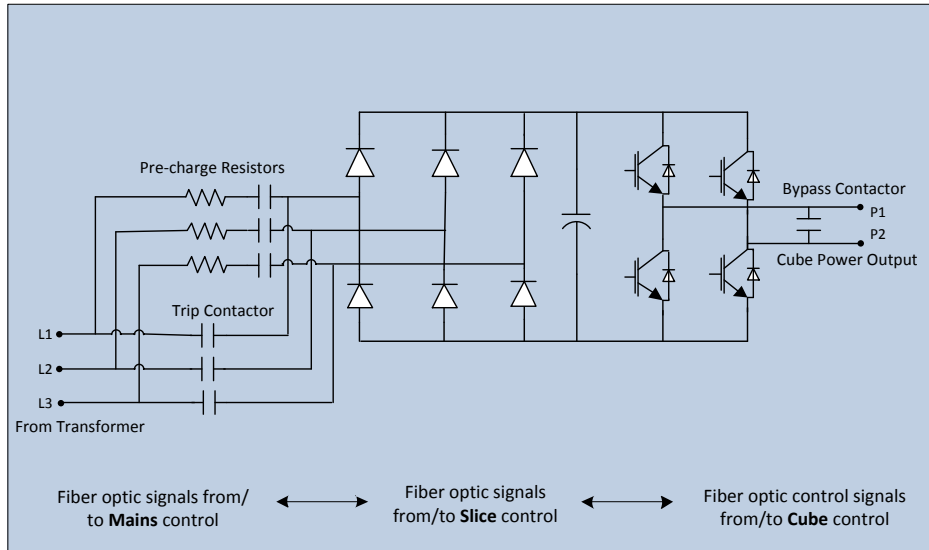
The transformer is an integral part of the Slice. Each 18-pulse transformer has either a +5° or -5° phase shift, producing an overall input waveform which is equivalent to a **36 pulse transformer**.

The VersaBridge® MVD design meets the most stringent requirements for harmonic distortion as defined by IEEE-519. The topology does not require the installation of additional harmonic filters.

The Slice concept minimizes the installation and site requirements. The VersaBridge® modular design and direct connection to the line configuration can lower the investment and increase the reliability and lifetime of the installation.

CUBE TOPOLOGY

Each Cube is a building block of the system. Each VersaBridge® Cube is exactly the same regardless of voltage or power classification. The power electronics module includes AC/DC diode rectifier, DC link film capacitors, and DC/AC H-Bridge inverter section.



Incoming three phase AC voltage (L1, L2, and L3) is rectified by diode rectifier then H-Bridge converts the DC voltage to single phase voltage (P1, P2) using space vector pulse width modulation.

With connecting Cubes in series and phase shifting the output, the VersaBridge® drive can produce multilevel output very close to sinusoidal waveform with ultra-low THDs. Multi-level cascaded H-bridge topology creates high effective switching frequency in inverter output voltage with low IGBT switching frequency. This results in extremely low output current harmonics and increased efficiency from lower switching losses.

The standard pre-charge feature within the Cube utilizes an electronically controlled contactor to avoid high inrush currents at system startup.

Interchangeable Power Cube

Every power Cube is identical and interchangeable regardless of the system rating.

Cubes can be replaced and maintained individually. Straightforward installation and removal of the Cube reduces the downtime and facilitates training for maintenance and operations personnel.

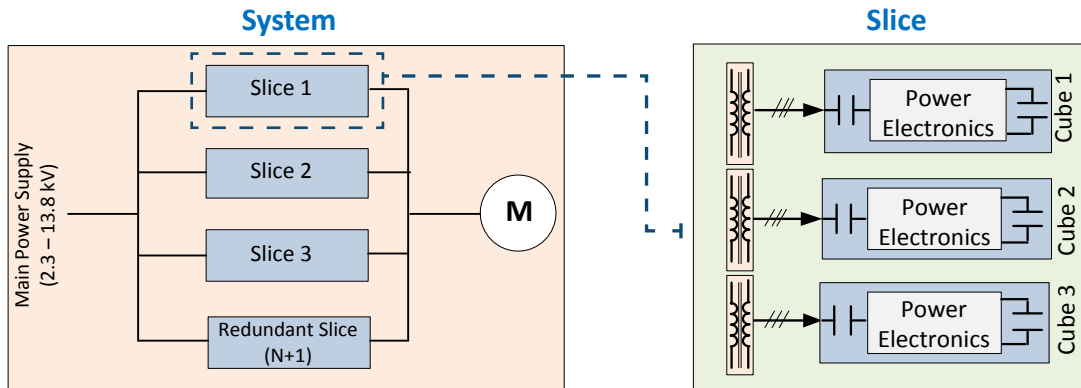


AUTOMATIC/ MANUAL BYPASS

The unique topology of the VersaBridge® drives allows for N+1, N+2, ... N+N redundant configurations possible by adding more Slices to the system.

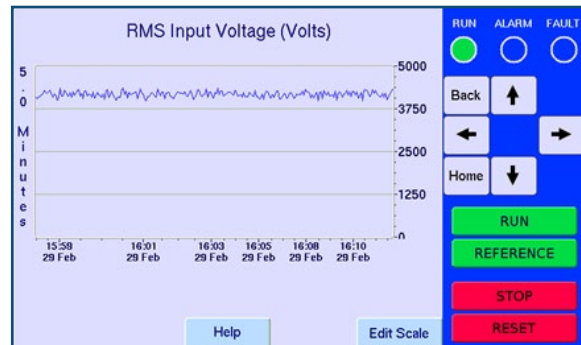
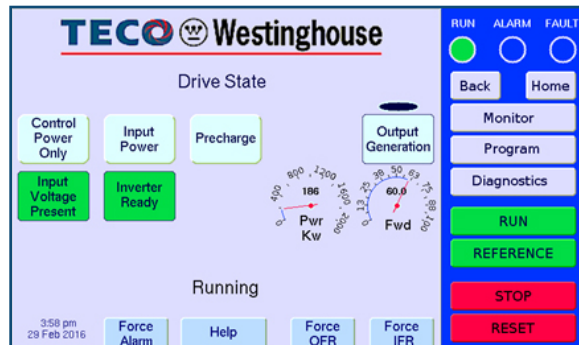
Each Cube includes input and output isolation contactors. The MVD can operate at full power even with a failed Slice. In the case of failure, the VersaBridge® control will determine which Slice failed, isolate it from the system by opening the contactors, and restart it into the spinning load as shown below.

In the unlikely event of a Cube failure, the redundancy provided by additional Slices allows the drive to keep running by bypassing the failed Slice(s) for critical applications. This provides higher reliability in the event of component fault or failure.



TOUCHSCREEN CONTROL

A user-friendly 7" touchscreen display comes as standard for easy configuration and monitoring of the drive. Numerous parameters can be displayed in either numerical or graphical format. Local/ remote connections are available for operations.

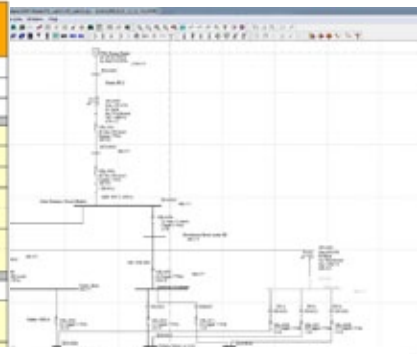


CUSTOM ENGINEERING SOLUTIONS

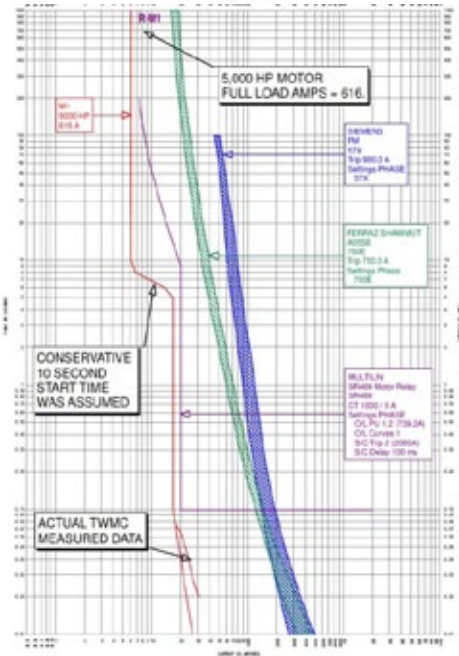
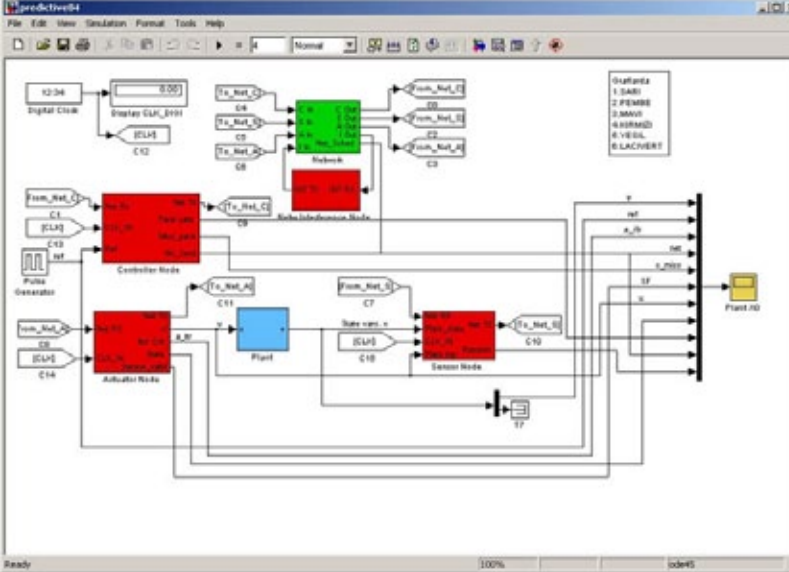
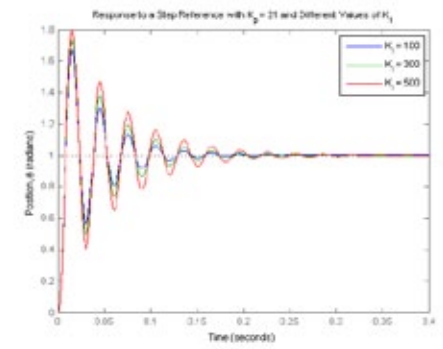
TECO-Westinghouse provides custom engineered systems designed to each customer's unique specifications. The engineering design process starts with understanding the customer's machine load during both start-up and steady state operation. TECO-Westinghouse can assist by providing system and arc-flash studies for optimized motor and MVD system configuration.



WARNING - Arc Flash Risk					
Client					
Location					
Job #	CSC	Date	1/21/2015	Engineer	CSC
Bus	1000-MAIN SWGR	Category			
Rated Volts	4160	Rated Amps	MI Ty Desc		
Main Device	787-W1-W	Device Settings			
SEL 787	Phase		5TP1P, (0.5-16 x CT)U3, Very Inverse	50P1P, (0.5-96 x CTR)	50P1D, (0.001 - 56)
50P51P, 5A nom.	5.8 (50SA)		6	96 (15360A)	0.001
Frame	Sensor	Plug			
Arc Flash Calculation - NFPA 70E 2015 Annex D.4 - IEEE 1584					
Bolted Short Circuit Fault	23.0 kA 3Phase	Trip Delay	1.917 s	Breaker Open	0.083 s
Arcing Fault in Protective Device	11.3 kA 3Phase				
Arc/Equipment Type	Switchgear	Gap: 104	Ungrounded		
Arc Flash Boundary	96' 5" @ 1.2 cal/cm ² - 2nd Degree Burn Boundary of Bare Skin				
Working Distance	36 inches		21	24	30
Incident Energy	35 cal/cm ²		59	52	42
PPE (Arc Rating: 40 cal/cm ²)	Arc-rated shirt & pants + arc-rated coverall + arc-rated arc flash suit				

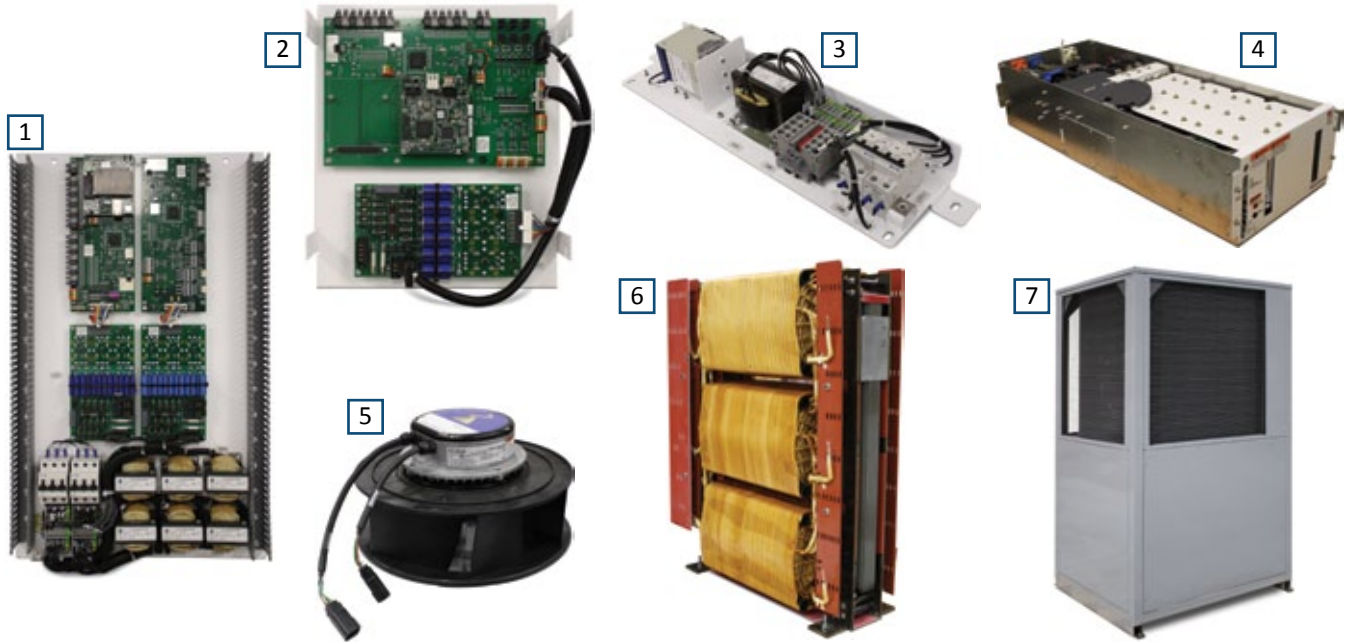


Contributor	Phase	Volt	Angle	Impedance	Source
1000-MAIN SWGR	A	4160	0.0	0.000 + j0.000	1000-MAIN SWGR
1000-MAIN SWGR	B	4160	-120.0	0.000 + j0.000	1000-MAIN SWGR
1000-MAIN SWGR	C	4160	120.0	0.000 + j0.000	1000-MAIN SWGR



SERVICE, MAINTENANCE AND TRAINING

- The VersaBridge® only has FIVE standard spare parts, including TWO optional spare parts:
 1. Mains controls and power supply
 2. Slice control panel
 3. Slice power supply
 4. Cube inverter module
 5. Fan assembly
 6. Power transformer (optional)
 7. Remote cooling unit (optional)



- Service certification for family of VersaBridge® MVDs:
 - Allows end user or third-party service providers to be certified to service VersaBridge® products
 - Reduced potential for downtime with local staff trained on VersaBridge® units
 - Customizable VersaBridge® training sessions
 - Course technical content is tailored specifically to the expertise of attendees
 - Classroom, laboratory, and/or field based curriculums with topics including:
 - VersaBridge® and general MVD basics
 - Field installation
 - Operation
 - Maintenance
 - Hands-on training with VersaBridge® units:
 - HMI touchscreen and PC software
 - Alarm and fault diagnosis
 - Spare parts replacement
 - Portable field Cube tester
- Field technical assistance available from TECO-Westinghouse service group:
 - VersaBridge® installation and commissioning
 - TECO-Westinghouse Motor & Drive System installation and commissioning
- **Field Service Troubleshooting Hotline (1-800-247-6989). The hotline is available 24 hours a day, 7 days a week.**

COOLING SYSTEM

The **patented MVD cooling system** removes heat by moving refrigerant through heat exchangers mounted directly to the electronics in each Cube. The liquid refrigerant vaporizes as it moves through the heat exchangers, which collects heat from the electronics. Afterward, refrigerant is passed through an air-cooled condenser, which turns it back into a pure liquid. The refrigerant then gets pumped back to the electronics.

The R134a cooling medium has the following advantages:

- Readily available
- Electrically non-conductive
- Non-flammable
- No liquid leaks
- Non-corrosive
- Non-toxic



Layout: The VersaBridge® drive can be located either indoors or outdoors with the Remote Cooling Units (RCU).

Advantages: The primary advantage of this cooling system is that the heat removal is based on latent heat instead of a temperature difference, which makes it much more effective than other cooling methods. This proprietary technology uses real-time power calculations to determine the amount of refrigerant the system needs.

Other advantages include:

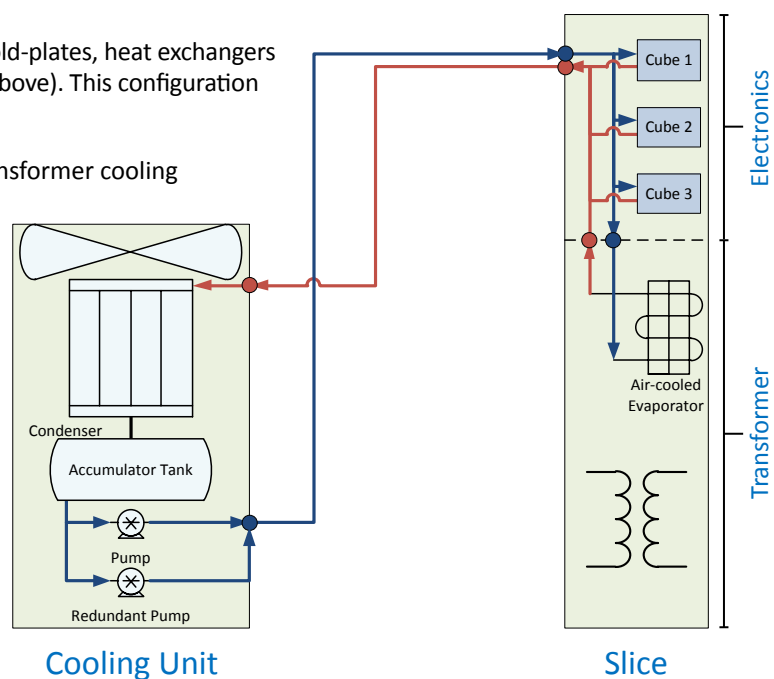
- Easy to install
 - Dry lock connection: no special tool is required to make or break the connections.
 - System ships pre-loaded with refrigerant.
- Low operating pressure
 - A low pressure pump is used instead of a high pressure compressor to move the refrigerant.
 - Lower risk of leaks
- Isothermal process
 - No temperature gradient; all electronics are kept at the same temperature.
- Extremely power dense: reduced footprint
- Remote Cooling Units can be located outdoors.
 - Transferring system heat outdoors dramatically reduces capital, operating, and maintenance costs for HVAC.

Configuration

Electronics Cooling: Refrigerant removes heat via cold-plates, heat exchangers mounted directly to the power electronics (shown above). This configuration allows for completely sealed power electronics.

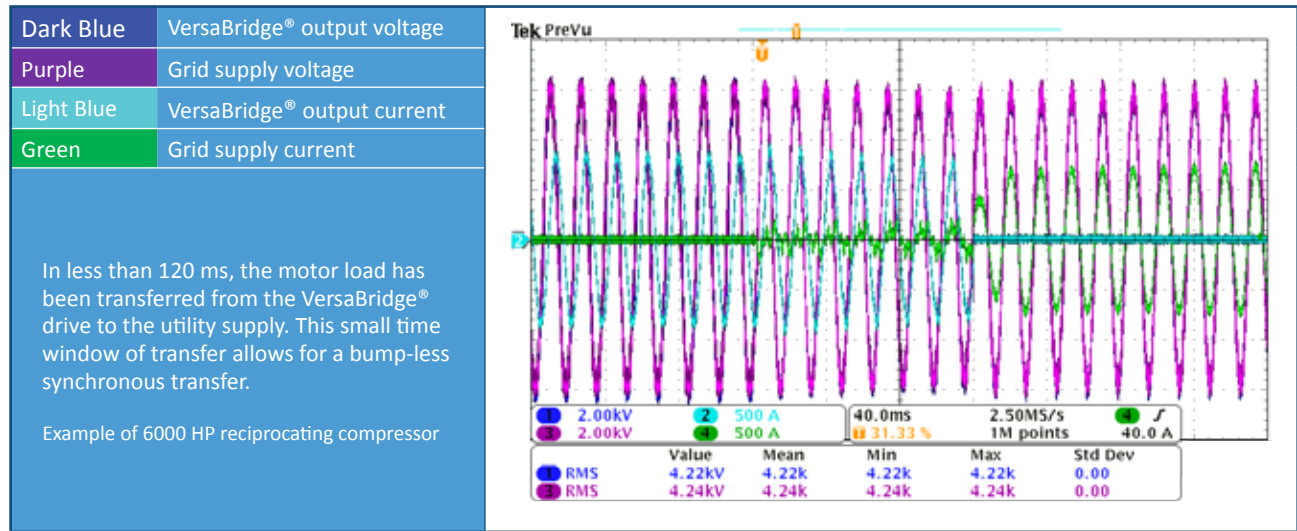
Transformer Cooling: Two options available for transformer cooling

- **NEMA 1 Air Cooled:** Direct air flow through cabinet
- **NEMA 3R Two Phase Cooled:** Refrigerant carries heat away via a heat exchanger located in a sealed drive cabinet. This eliminates the need for a dedicated HVAC and E-House.

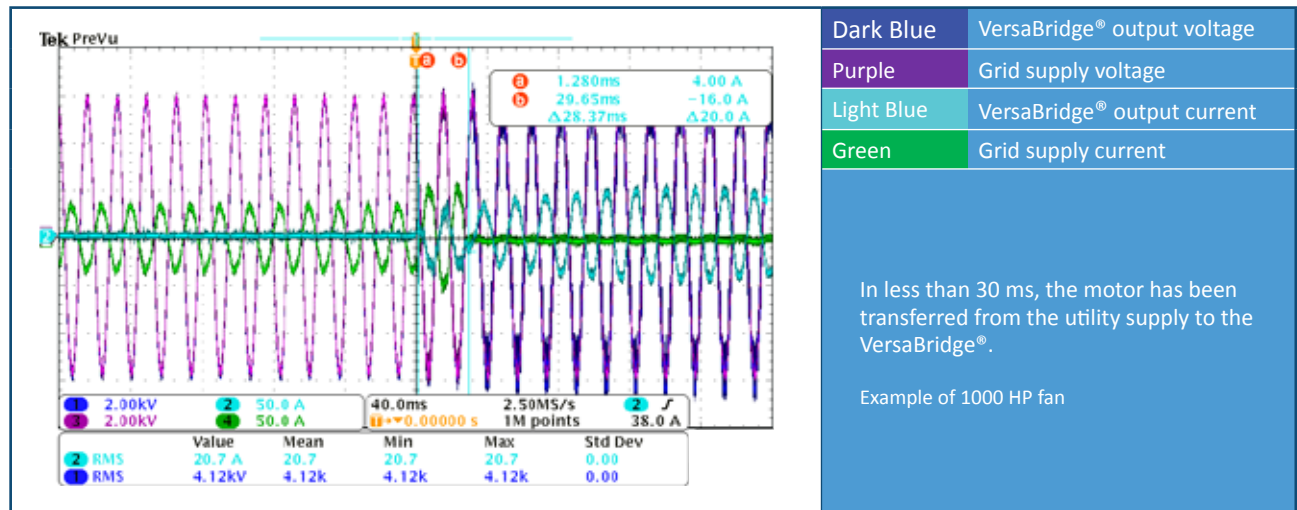


SYNCHRONOUS TRANSFER

A significant advantage of using VersaBridge® MVDs is to avoid across the line starts by quickly ramping the motors from zero speed to nominal speed in a controlled fashion. This soft start allows large motors to be sequentially started while minimizing the mechanical and electrical strain on motors and their loads.



The VersaBridge® synchronous transfer feature enables one drive to soft start multiple motors as well as transfer motors from the utility grid to the drive. The method of bump-less synchronous transfer implemented with the VersaBridge® MVD eliminates torque pulsations during the transfer avoiding process fluctuation in the system.



Input Current Harmonics

By using multiple 18 pulse input transformers, 36 effective pulse configurations results in an input current total harmonics distortion (THD) of less than <2%. This is achieved without filters.

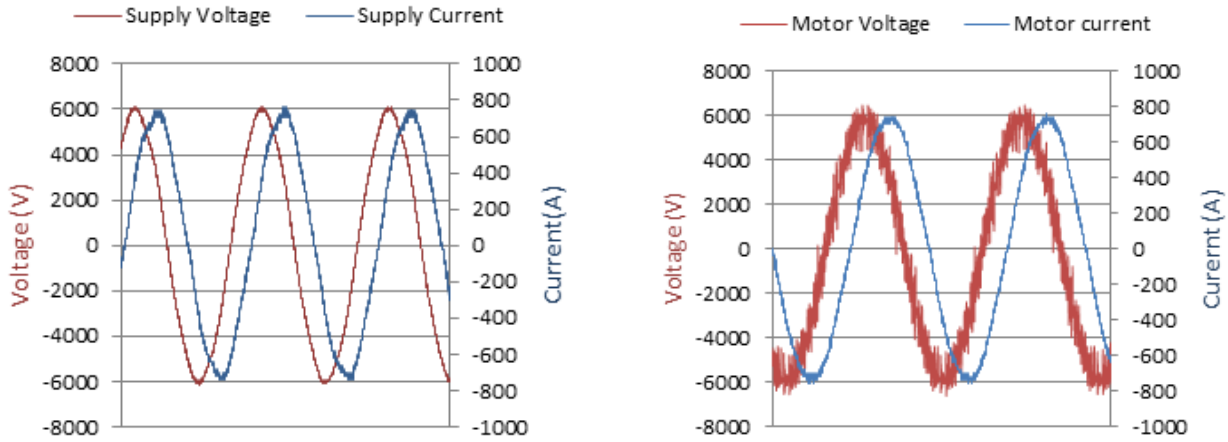
Harmonic #	5	7	11	13	17	19	23	25	THD
% IEEE 519 Limit	4	4	2	2	1.5	1.5	0.6	0.6	5
% VersaBridge® Drive*	0.98	1.38	0.35	0.21	0.01	0.004	0.019	0.014	1.79
% Typical 24 Pulse Drive	2.6	1.6	0.7	0.4	0.2	0.1	1.9	0.8	3.8

* VersaBridge®, 4160 V, 6000 HP configuration

LINE AND MOTOR CURRENT AND VOLTAGE

The VersaBridge® design provides near sinusoidal current and voltage. A combination of high PWM switching frequency and multi-level PWM output produces very low levels of electrically induced pulsating torques at the motor shaft.

Near sinusoidal input and output currents minimize site installation issues by allowing the VersaBridge® drive to be located further away from the motor installation.



Testing can be done at the TECO-Westinghouse facility in Texas with VersaBridge® MVD units. The motors and VersaBridge® MVDs shown in the image below were manufactured at this location and demonstrated that motor temperature rise at full load (measured by RTDs) is only 1°C higher when compared to across the line operation.



SPECIFICATIONS

Electrical

Output Voltage	0 – 13.8 kV
Output Frequency (Min - Max)	0 – 120 Hz
Auxiliary Supply	200 - 240 V, 1 ϕ std; optional configuration available
Rated Supply Voltage	2.3 – 13.8 kV \pm 10%
Rated System Frequency	60 Hz \pm 5%
Voltage Variation	-30% to +10% for 30 line cycles
Input Current Harmonics THD	\leq 2% Exceeds IEEE-519 requirements
Inverter Topology	H-Bridge
Capacitors	Film
Regulatory Compliance	IEEE, ANSI, NEMA, UL, cUL
Controls	V/Hz, Sensorless vector
Speed Regulation	0.1% with feedback, 0.5% without feedback
Connection	Top, bottom or both cable entry/exit
Power Ride Through	Minimum 5 cycles
Nominal Efficiency	97%
Input Power Factor	\geq 96%
Output Current Harmonics THD	$<$ 1%
Power Transformer Topology	Modular
Power Transformer Rating	750 kVA/ Slice
Spinning Load	Catch a spinning load
Auto-Cube Bypass	Automatic and manual
Synchronous Transfer	Automatically transfer the motor to/from the utility line
Power Section Isolation	Fiber optic cable
Service Duty	CT: 150% , VT: 110% for 1 min every 10 min
Display	7" TFT color LCD screen, LED backlighting
Communication Interface	Modbus TCP/IP (Ethernet), RS-232 , and RS-485, PLC I/O, others available upon request

Mechanical

Standard Rating	NEMA 1, NEMA 3R
Cabinet Dimension (Mains or Slice)	H: 105 in (+1 in, lifting) x W: 25 in x D: 68.4 in
Material	ASTM A366
Color	White
Total Weight	Mains: 1289 lbs, Slice: 4852 lbs

Environmental Condition

Ambient Temperature	-20 to +40°C (lower/ higher temperature*)
Altitude	0 to 3300 ft (higher elevation*)
Humidity	95%, non-condensing
Noise Level	\leq 78 dB

Cooling System

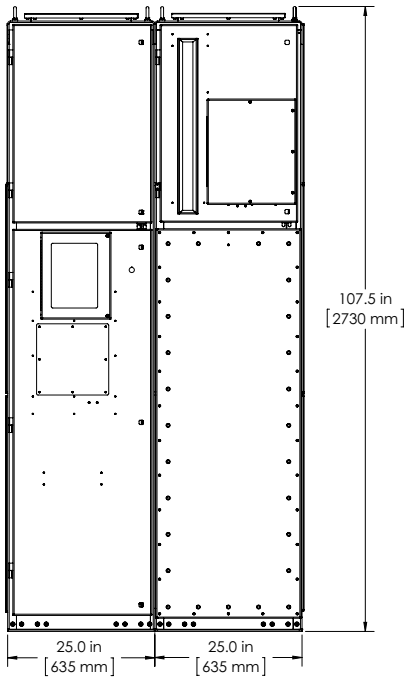
Transformer	Choice of forced air-cooled or two phase cooling (R134a)
Electronics	Two phase cooling (R134a)

* Consult factory for additional options.

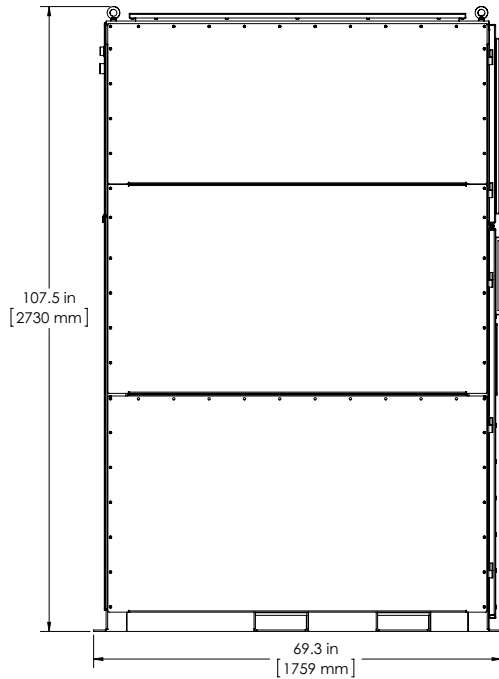
DIMENSIONS

Mains and Slices have the same dimensions, which makes it easy to configure the VersaBridge® MVD for various input/output voltages and power requirements in a given space or location.

Mains/ Slice

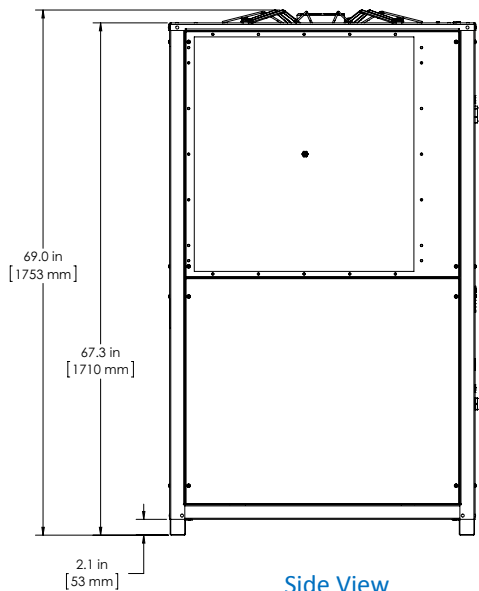


Front View

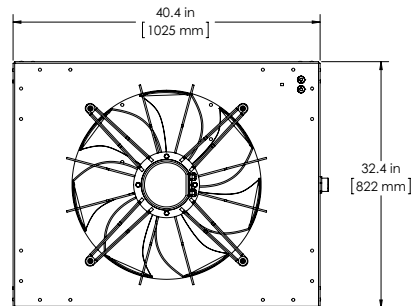


Side View

Cooling Unit

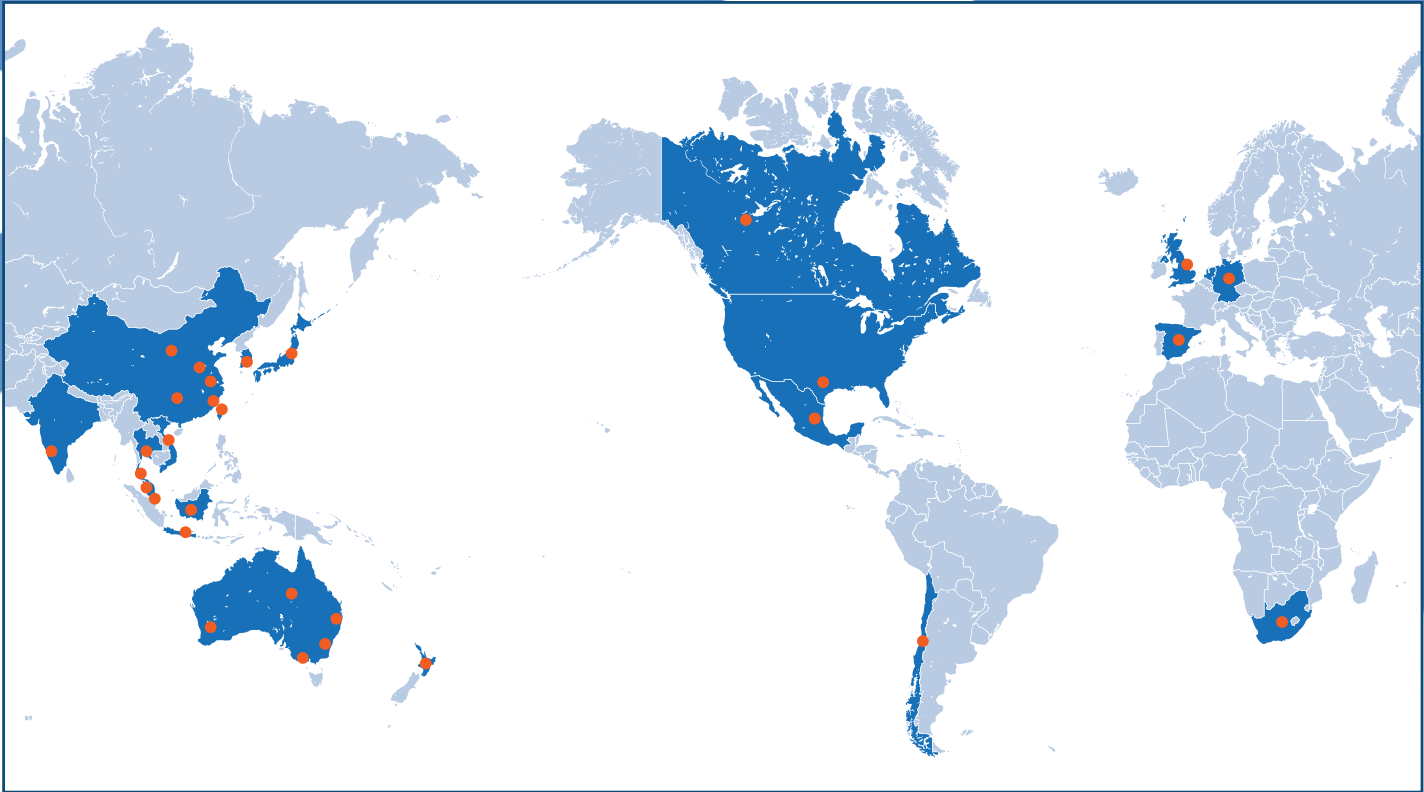


Side View



Top View

GLOBAL PRESENCE



NORTH AMERICAN LOCATIONS

USA

TECO-Westinghouse Motor Co.
5100 N. IH-35
Round Rock, TX 78681
1-800-247-6859
www.tecowestinghouse.com

MEXICO

TECO-Westinghouse Motor Co. SA. de C.V.
Circuito Mexiamora Poniente 321
Parque Industrial Santa Fe Gto. Puerto Interior C.P. 36275
Silao, Guanajuato, Mexico
+52-472-7489016
www.tecowestinghouse.com.mx

CANADA - EDMONTON

TECO-Westinghouse Motors (Canada), Inc.
18060-109th Ave.
Edmonton, AB T5S 2K2
1-800-661-4023
www.tecowestinghouse.ca

CANADA - CAMBRIDGE

TECO-Westinghouse Motors (Canada), Inc.
1165 Franklin Blvd., Unit A-C
Cambridge, ON N1R 8E1
1-800-268-4770
www.tecowestinghouse.ca

FIELD SERVICE HOTLINE: 1-800-247-6859

24 hours a day, 7 days a week



D-VB 3-16

